

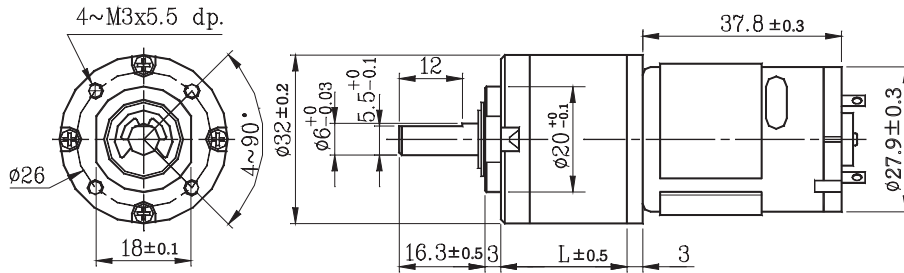
JCI-32GM 01&02 TYPE

엔코더 장착 가능 51Page 참고

- 사용 습도(Operating relative humidity) : 20% ~ 85%
- 사용 온도(Operating temperature) : -10°C ~ +60°C



제품도면 (Dimension)



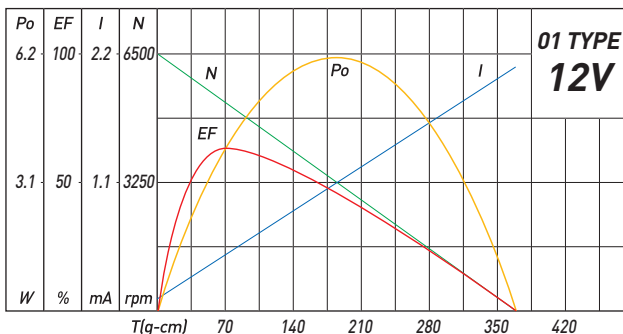
감속모터 사양 (Geared Motor Specification)

감속기 길이 (mm) Gear Head L	20.6				27.0				33.4				39.8					
감속비 Reduction ratio	1/5	1/14	1/19	1/27	1/35	1/51	1/71	1/100	1/139	1/189	1/264	1/516	1/721	1/939				
01 Type 12v	정격토크(kg-cm) Rated torque	0.3	0.75	1.0	1.4	1.9	2.3	3.3	4.6	6.5	7.3	10	12	12	12			
	정격 회전수(RPM) Rated speed	995	373	270	195	150	104	74	53	38	28	20	11.2	8.3	6.3			
02 Type 24v	정격토크(kg-cm) Rated torque	0.3	0.7	1.0	1.4	1.8	2.2	3.1	4.4	6.1	6.9	9.7	12	12	12			
	정격 회전수(RPM) Rated speed	990	370	265	191	150	103	74	53	38	28	20	11.2	8.3	6.3			

모터부 사양 (Install motor specification)

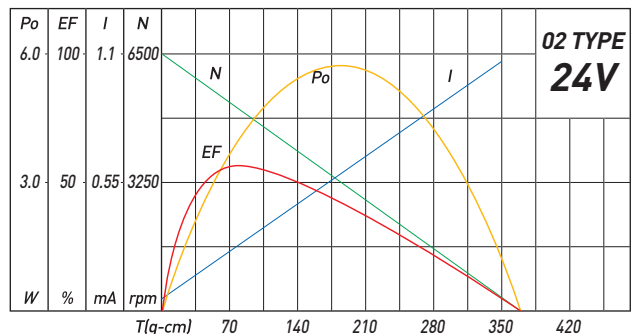
01Type Motor (DC 12v)

• 정격 토크 Rated torque	78	(gf-cm)
• 정격 회전수 Rated speed	5,290	(RPM)
• 정격 전류 Rated current	530	(mA)
• 무부하 회전수 No load speed	6,500	(RPM)
• 무부하 전류 No load current	150	(mA)
• 정격 출력 Rated output	4.22	(W)



02Type Motor (DC 24v)

• 정격 토크 Rated torque	74	(gf-cm)
• 정격 회전수 Rated speed	5,250	(RPM)
• 정격 전류 Rated current	250	(mA)
• 무부하 회전수 No load speed	6,500	(RPM)
• 무부하 전류 No load current	85	(mA)
• 정격 출력 Rated output	3.97	(W)



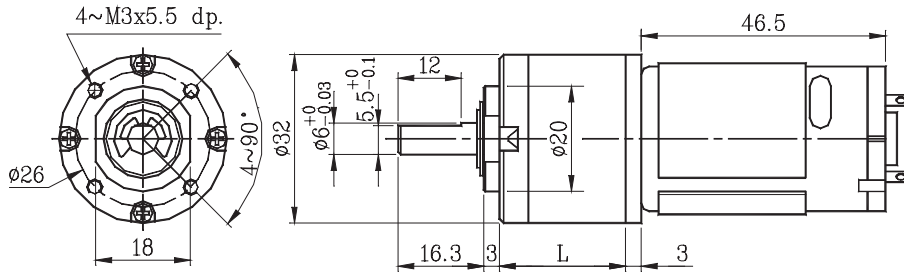
JCI-32GM 03&04 TYPE

엔코더 장착 가능 51Page 참고

- 사용 습도(Operating relative humidity) : 20% ~ 85%
- 사용 온도(Operating temperature) : -10°C ~ +60°C



제품도면 (Dimension)



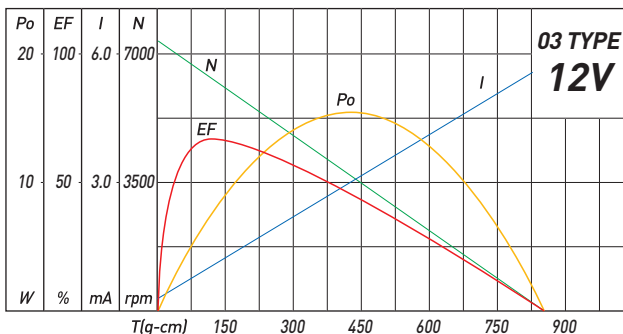
감속모터 사양 (Geared Motor Specification)

감속기 길이 (mm) Gear Head L	20.6				27.0				33.4				39.8					
감속비 Reduction ratio	1/5	1/14	1/19	1/27	1/51	1/71	1/100	1/139	1/189	1/264	1/516	1/721	1/939					
03 Type 12v	정격토크(kg-cm) Rated torque	0.45	1.1	1.5	2.1	3.4	4.7	6.6	9.1	10	12	12	12	12				
	정격 회전수(RPM) Rated speed	1140	430	310	221	117	83	60	44	32	24	12.9	9.5	7.2				
04 Type 24v	정격토크(kg-cm) Rated torque	0.54	1.2	1.7	2.4	4.0	5.5	7.8	10	12	12	12	12	12				
	정격 회전수(RPM) Rated speed	1170	445	320	229	121	87	62	45	34	25	13	9.6	7.2				

모터부 사양 (Install motor specification)

03Type Motor (DC 12v)

• 정격 토크 Rated torque	110	(gf-cm)
• 정격 회전수 Rated speed	5,950	(RPM)
• 정격 전류 Rated current	900	(mA)
• 무부하 회전수 No load speed	7,300	(RPM)
• 무부하 전류 No load current	150	(mA)
• 정격 출력 Rated output	7.0	(W)



04Type Motor (DC 24v)

• 정격 토크 Rated torque	130	(gf-cm)
• 정격 회전수 Rated speed	6,160	(RPM)
• 정격 전류 Rated current	500	(mA)
• 무부하 회전수 No load speed	7,300	(RPM)
• 무부하 전류 No load current	80	(mA)
• 정격 출력 Rated output	8.5	(W)

