

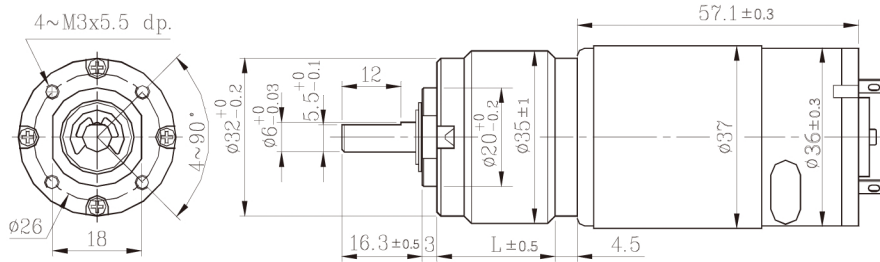
JCI-32PGM 01&02 TYPE

엔코더 장착 가능 51Page 참고

- 사용 습도(Operating relative humidity) : 20% ~ 85%
- 사용 온도(Operating temperature) : -10°C ~ +60°C



제품도면 (Dimension)



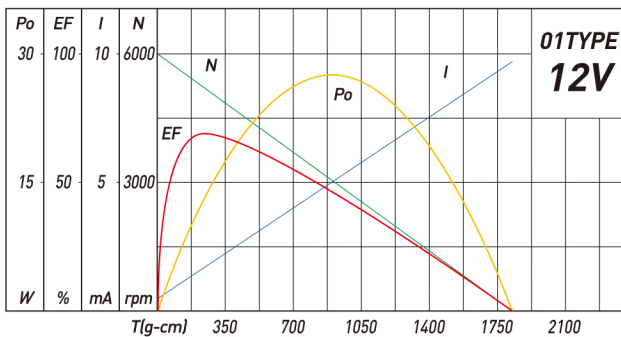
감속모터 사양 (Geared Motor Specification)

| 감속기 길이 (mm) Gear Head L | | 22.1 | | | | 28.5 | | | | 34.9 | | | | 41.3 | | | |
|----------------------------|-----------------------------|------|------|------|------|------|------|-------|-------|-------|-------|-------|-------|------|--|--|--|
| 감속비 Reduction ratio | | 1/5 | 1/14 | 1/19 | 1/27 | 1/51 | 1/71 | 1/100 | 1/139 | 1/189 | 1/264 | 1/516 | 1/721 | | | | |
| 01 Type 12v | 정격토크(kg-cm) Rated torque | 1.0 | 2.4 | 3.3 | 4.7 | 7.6 | 8 | 10 | 10 | 12 | 12 | 12 | 12 | | | | |
| | 정격 회전수(RPM) Rated speed | 950 | 359 | 257 | 183 | 97 | 71.5 | 52 | 39 | 29 | 21 | 11 | 8 | | | | |
| 02 Type 24v | 정격토크(kg-cm) Rated torque | 1.0 | 2.3 | 3.2 | 4.5 | 7.3 | 8 | 10 | 10 | 12 | 12 | 12 | 12 | | | | |
| | 정격 회전수(RPM) Rated speed | 990 | 375 | 268 | 192 | 101 | 74.5 | 54 | 40 | 29.5 | 22 | 11.5 | 8 | | | | |

모터부 사양 (Install motor specification)

01Type Motor (DC 12v)

| | | |
|--------------------------|-------|---------|
| • 정격 토크 Rated torque | 250 | (gf-cm) |
| • 정격 회전수 Rated speed | 4,930 | (RPM) |
| • 정격 전류 Rated current | 1,600 | (mA) |
| • 무부하 회전수 No load speed | 6,000 | (RPM) |
| • 무부하 전류 No load current | 250 | (mA) |
| • 정격 출력 Rated output | 12.8 | (W) |



02Type Motor (DC 24v)

| | | |
|--------------------------|-------|---------|
| • 정격 토크 Rated torque | 240 | (gf-cm) |
| • 정격 회전수 Rated speed | 5,150 | (RPM) |
| • 정격 전류 Rated current | 750 | (mA) |
| • 무부하 회전수 No load speed | 6,000 | (RPM) |
| • 무부하 전류 No load current | 130 | (mA) |
| • 정격 출력 Rated output | 12.7 | (W) |

